

Maths: Speedy Six



1.  $346 - 92 =$
2.  $333 \times 4 =$
3. What is  $50 \div 10 =$
4.  $24 \div 3 =$
5. Round to the nearest 10.  
1234
6. How many faces does a cube have?



1. What are all the multiples of 7 between 70 and 80?
2. What is 26.8 divided by 100?
3. What  $\frac{4}{7}$  of 70? (remember...divide by the bottom and times by.....)
4. What is 23 minutes before 5.10pm?
5. Round 6 456 to the nearest 100.
6. How many faces does a sphere have?



Suffragettes

To help support our learning in school, we would like you to research Emmeline Pankhurst who was one of the main suffragists. We would like you to focus on three sections: early life, her contribution to the suffrage movement and her legacy. It is important that you collect as much information as you can about these 3 aspects as we will be using them in our writing in our English Lessons. Some of the information you research might be quite sensitive so it might be a good idea to look at it with a grown up. Record your research on the sheet.

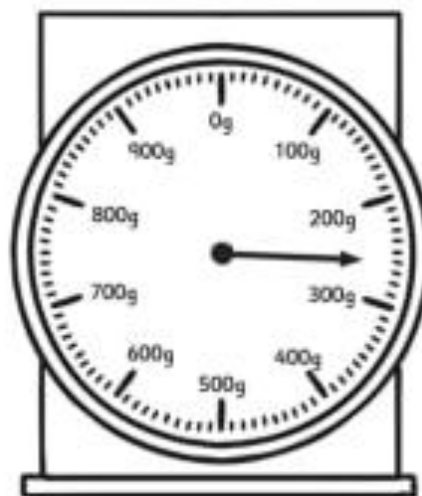
Spellings

<u>Green</u>	<u>Purple</u>
you've	also
they've	always
we've	almost
you'll	along
they'll	already
you're	alone
we're	before
she'd	more
desperate	morning
exaggerate	or

Optional Maths Extension:

One bonus house point available

What is the weight on the scale?



The jumps are in tens.