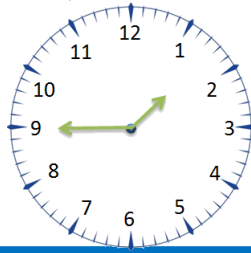


Maths: Speedy Six



1. $99 \times 10 =$
2. What is 8×8 ?
3. What is 10% of 60? (Remember divide 60 by 10)
4. Round 43 to the nearest 10.
5. What is 323×4 ?
6. What is the time of this clock?



1. $? \times 100 = 450$
2. $7654 - 6777 =$
3. What is $4545 \div 5$?
4. Round 9995 to the nearest 10.
5. $6654 \times 44 =$
6. What is 30% of 500? (Remember to find 10% first)

Sports Day Homework

This week you need to design a cover for the sports day programme. It must include the following:

- Herne's Sports Day
- Monday 15th July
- Start 9:30
- Where - the school field.

The design must be in black and white and fairly simple as it looks better when printed. You could include the house mascots, an event from sports day or a winner's cup.

Spellings

| <u>Core</u> interest | <u>Support</u> creation |
|-------------------------|----------------------------|
| disinterest | education |
| literacy | correction |
| literature | comic |
| differently | picnic |
| difference | keep |
| voluntary | believe |
| mischievous | feet |
| know | terrific |
| library | sheep |

Optional Maths Extension:
One bonus house point available

Write **each** of these numbers in its correct place on the sorting diagram.

40 8 15

